

HEATHERGAUDIOFINEART

66 Elm Street, New Canaan, CT 06840 p 203 801 9590 f 203 801 9580 heathergaudiofineart.com

FOR IMMEDIATE RELEASE – December 20, 2020

Heather Gaudio Fine Art

66 Elm Street

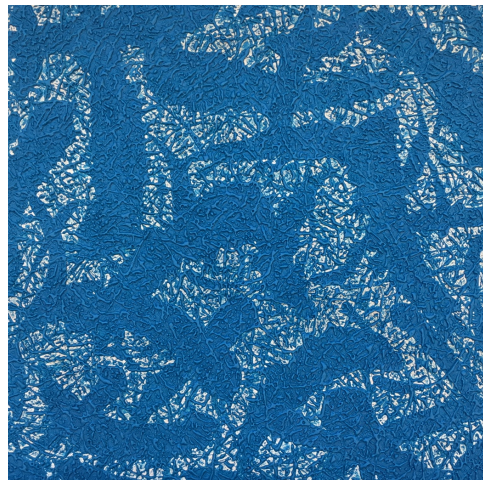
New Canaan, CT 06840

(203)801-9590

www.heathergaudiofineart.com

email: rachael@heathergaudiofineart.com

HEATHER GAUDIO FINE ART is pleased to present “Martin Kline: Allover Paintings,” his third solo exhibition at the gallery. The show will open on January 23rd and run through March 6th, 2021.



Throughout the course of his career, Kline has examined systems of historicism and presentation, his focused and disciplined approach creating bodies of works in series, each with their distinctive visual language. Among his many investigations, Kline has looked to notions of authenticity, sincerity and originality, and, as he states, there comes a point when an artist “cannot escape Jackson Pollock.” For this exhibition, Kline presents his newest group of paintings entitled *Allover*, inspired by the drip technique he utilized in *Dream of Pollock (for Kirk Varnedoe)* back in 2007.

The multi-colored *Allover* series consists of, for the most part, strictly monochromatic abstractions. Created in a looser, automatist fashion, these paintings have a more fluid sensibility, with random thread-like rivulets of pigment networked in and out of broader, purposeful bands of color. Unlike previous series, these paintings lack compositional focal points, nor do they possess narrative characteristics seen in his *Hammocks* assemblages. The viewer’s eye is free to wander all over and engage with the painted surface indiscriminately.

While Kline may be revisiting the spontaneous technique for which Pollock became famous, the approach to painting with the panel positioned horizontally has been very much decidedly his own from early on. Kline has mostly worked on his surfaces laid horizontally, typically on a tabletop—his signature additive approach to painting requiring the pull of gravity to fasten the pigments *in situ* while drying. For the most part, Kline’s hand has had a direct touch through the use of a paintbrush on the paper, panel or canvas. In the *Allover* paintings, Kline is still working horizontally but he has severed the traditional anatomical connection, distancing himself from the surface even more by placing the panels on the floor. This increased space relinquishes control for the drips and pours to act more randomly and allow for elements of surprise to occur. Most of the panels in this series lack confining frames and the sides are free of splashed

HEATHERGAUDIOFINEART

66 Elm Street, New Canaan, CT 06840 p 203 801 9590 f 203 801 9580 heathergaudiofineart.com

pigments that reveal the process. The resulting suggestion is that the drips and thicker gestures of color travel beyond the picture plane. It is as if the viewer is getting a snapshot, a window into elements that exist outside the painting's boundaries.

Kline has enjoyed a prolific artistic career, creating a continuum of output that draws from a wealth of sources including his own works. His paintings, drawings and sculptures are represented in many notable private and public collections worldwide, including the Albertina, Vienna, Austria; The Metropolitan Museum of Art, New York; the Whitney Museum of Art, New York and the Yale University Art Galleries, New Haven, CT.

Heather Gaudio Fine Art specializes in emerging and established artists, offering painting, works on paper, photography and sculpture. The gallery provides a full range of art advisory services, from forming and maintaining a collection, to securing secondary market material, to assisting with framing and installation. The focus is on each individual client, selecting art that best serves his or her vision, space, and resources. The six exhibitions offered every year are designed to present important talent and provide artwork appealing to a broad range of interests. Gallery hours are Tuesday through Saturday; 10:30am to 5:30pm; and by appointment.

For more information and/or high-res images, please contact Rachael Palacios, rachael@heathergaudiofineart.com.



Martin Kline, *Burgundy Allover*, 2020, 48 x 48 x 2 ¾ inches